



SCHOOL OF NURSING
LI KA SHING FACULTY OF MEDICINE
THE UNIVERSITY OF HONG KONG



6th Hong Kong International

Nursing Forum

10-11 December 2015



**Excellence in Nursing Practice,
Education and Research across Life Span**

Co-organisers:



ontents

Organising Committee	2
Co-organisers	3
Welcome Messages	4
Congratulatory Messages	8
Venue	13
Programme at a Glance	15
Concurrent Sessions	17
Keynote Speakers	23
Concurrent Sessions Abstract	36
List of Poster Presentation	37
Acknowledgement	44

Organising Committee

Chairperson: Dr Angela YM Leung

Ex-officio Member: Professor Agnes Tiwari

Scientific Sub-committee:

Chair: Dr Marie Tarrant

Members: Dr Wen Deng Dr Daniel Fong
Dr William Li

Programme Sub-committee:

Chair: Dr Patsy Chau

Members: Ms Claudia Chan Ms Maggie Chan
Mr Lawrence Cheung Dr Kelvin Wang

Promotion and Sponsorship Sub-committee :

Co-chairs Ms Joyce Au Dr Janet Wong

Member: Ms Jessica Cheuk Ms Joyce Chong
Ms Dodo Chow Ms Winnie Chung
Ms Cecilia Kong Mr William Lam
Ms Zoe Ng Ms Maggie Pun
Ms Vivien Tsang Ms Alice Wong

Post-forum Tour Sub-committee:

Chair: Dr Noel Chan

Members: Mr Edmond Chan Ms Michelle Law
Ms Vivien Tsang Ms Hellene Yiu
Ms King Yu

Gala Dinner Sub-committee:

Chair: Dr Polly Chan

Members: Ms Joyce Au Ms Celia Chow
Mr John Fung Dr Veronica Lam
Ms Chloe Yan Ms Grace Yuen

Co-organisers



School of Nursing
Capital Medical University



Xiang Ya Nursing School
Central South University



Faculty of Nursing
Chiang Mai University



School of Nursing
Dalian University



School of Nursing
Fourth Military Medical University



School of Nursing
Fudan University



School of Nursing
Kaohsiung Medical University



School of Nursing
Peking Union Medical College



School of Nursing
Peking University



School of Nursing
Shanghai Jiao Tong University



School of Nursing
Sun Yat-sen University



School of Nursing
Third Military Medical University



Health Science Center
Xi'an Jiaotong University



College of Nursing
Zhejiang Chinese Medical University

Welcome Messages



Professor Agnes Tiwari

*Professor and Head
School of Nursing
The University of Hong Kong*

On behalf of the School of Nursing of The University of Hong Kong, I have great pleasure in welcoming you to the 6th Hong Kong International Nursing Forum.

The Hong Kong International Nursing Forum provides participants an opportunity to network with international nursing academics, researchers and professionals from around the world and update themselves on the latest knowledge and developments in nursing. We are pleased to host this year's Forum with the support of 14 co-organisers, which are the leading universities/institutes from mainland China and the Region.

Our Forum theme this year is titled "Excellence in Nursing Practice, Education and Research across Life Span". We aim at promoting exchange of knowledge on the latest developments on the practice, research and education of nurses and healthcare professionals. The Forum has been a dedicated platform for advancing knowledge exchange and sharing insights on the latest innovations in clinical practice, diagnostic and treatment methods, as well as health education/promotion which will benefit the community.

I would also like to take this opportunity to express our gratitude to the Tien's family, for supporting the Grace Tien Lecture in the Forum. We are most grateful to the distinguished speakers for sharing their insight and knowledge with us. We thank also our co-organisers and the organising committee, for their stellar efforts in making this Forum a most memorable event.

I wish all participants a fruitful and rewarding experience in this year's Forum and a pleasant stay in Hong Kong.

A handwritten signature in black ink, appearing to read 'A. Tiwari'.

Professor Agnes Tiwari

Professor and Head
School of Nursing
The University of Hong Kong

Welcome Messages



Professor Peter Mathieson

*President and Vice-Chancellor
The University of Hong Kong*

On behalf of the University of Hong Kong, a very warm welcome to the participants of the 6th Hong Kong International Nursing Forum.

The Forum is a platform for international and local researchers, educators and clinical practitioners in nursing to exchange knowledge and insights on advances in nursing practice and research.

Nursing has grown in prominence and complexity especially in the last decade and I am confident participants will find this Forum to be a timely opportunity to share and learn about the latest developments in nursing research and practice, and also to build networks and partnerships with peers and colleagues in the discipline.

My congratulations to the HKU School of Nursing and the 14 co-organisers from renowned universities and institutes from around the world on what I am sure will be a productive and successful event.

A handwritten signature in black ink that reads "Peter Mathieson". The signature is written in a cursive, flowing style.

Professor Peter Mathieson
President and Vice-Chancellor
The University of Hong Kong

Welcome Messages



Professor Gabriel Leung

Dean

Li Ka Shing Faculty of Medicine

The University of Hong Kong

It gives me great pleasure to welcome you to the 6th Hong Kong International Nursing Forum, an event that gives us all an important opportunity to learn best practices from each other in our increasingly connected world.

Here in Hong Kong, we face circumstances that are repeating across the developed world. The population is ageing, there is growing demand for long-term nursing care, and the overall demand for nurses is huge. How to meet these challenges when there may be manpower shortages, changing environments and/or resource constraints is something that many healthcare providers are now grappling with. The sharing of experiences and solutions today by scholars and professionals from different countries and cultures, should therefore be invaluable to all participants.

This year's forum also marks the 20th anniversary of HKU's School of Nursing, which provides professional nursing training in the latest and best practices, adapted to Hong Kong's unique, space-constrained environment. Over the years, our nursing programme has blossomed from a part-time undergraduate programme to a fully-fledged School that not only offers education but conducts world-class research in such areas as tobacco control and family violence. In the recent city-wide Research Assessment Exercise, the School scored highest of all health sciences units for the outstanding quality of its research. This is a tribute to the academic staff and to the strong leadership they have received under the current Head, Professor Agnes Tiwari, and her predecessors Professor S.P. Chow, Professor Patricia L. Sullivan, and especially the longest-serving member of staff and present Under Secretary for Food and Health, Professor Sophia Chan.

Our academic staff and graduates have rich expertise and experience that I am certain will benefit all participants in today's forum. I wish you a fruitful and insightful exploration of how to achieve our shared, ultimate goal of providing the best possible patient care.



Professor Gabriel Leung

Dean

Li Ka Shing Faculty of Medicine

The University of Hong Kong

Welcome Messages



Dr Angela Yee Man Leung

Forum Chair

6th Hong Kong International Nursing Forum

School of Nursing

The University of Hong Kong

On behalf of the Organising Committee, I take great pleasure in welcoming you to the 6th Hong Kong International Nursing Forum on December 10 & 11, 2015 in Hong Kong. This two-day Forum is organized by the School of Nursing, the University of Hong Kong with Co-organisers from world-renowned universities and institutes.

This year, we focus on “Excellence in Nursing Practice, Education and Research across Life Span”. The Forum brings in leading scholars from Australia, Canada, China, Thailand, U.K. and U.S. to share the most up-to-date information in nursing research and practice.

This Forum provides an excellent platform for active exchange and collegial networking among practitioners, educators and researchers. Renowned overseas experts, outstanding scientists and practitioners have been invited to share with us their experiences, innovative practices and discoveries along the sub-themes: maternal and child health, family and community health, paediatric nursing, chronic disease prevention and care, and nursing education. This platform will surely encourage all participants’ active involvement in knowledge exchange and discussions.

My sincere gratitude goes to members of the Organising Committee who have made dedicated efforts and provided invaluable input over the last few months. I would also like to thank all distinguished speakers for their insightful presentations, all delegates’ and guests’ participations and all sponsors’ enduring support to the Forum. I wish your stay in Hong Kong to be professionally rewarding and pleasurable!

A handwritten signature in black ink that reads "Angela Yee Man Leung".

Dr Angela Yee Man Leung

Forum Chair

6th Hong Kong International Nursing Forum

School of Nursing

The University of Hong Kong

Congratulatory Messages from Co-organisers



Capital Medical University, China

On the occasion of the 20th anniversary of School of Nursing, The University of Hong Kong and of the 6th Hong Kong International Nursing Forum which will be held on December 10-11, 2015 in Hong Kong, I would like, on behalf of Capital Medical University School of Nursing, to extend our sincere congratulations on your achievements in nursing education and nursing research in the past 20 years, and on hosting this great scientific event. As a friend of Professor Agnes Tiwari and Co-organiser of the “6th Hong Kong International Nursing Forum”, I am so proud of what you have accomplished academically in nursing, and what you will contribute to the development of nursing domestically and internationally. In making nursing excellence and achievements to be recognized by the international community, School of Nursing at HKU has made it possible through excellent academic events, let the “6th Hong Kong International Nursing Forum” bring us together again in this December, and being inspired. We are all looking forward to this stimulating event, and I wish it a great success in December.

Professor Wu Ying
Dean and Professor
School of Nursing



Chiang Mai University, Thailand

On behalf of the Faculty of Nursing, Chiang Mai University, it gives me great pleasure to congratulate The Hong Kong University on organizing ‘The 6th Hong Kong International Nursing Forum’. This important event, focusing on ‘Excellence in Nursing Practice, Education and Research across Lifespan’, will act as a timely platform from which to discuss how nursing can be effectively applied to patients at every stage of life. As lifespans increase with advancing medical technology and knowledge, understanding how to manage and care for the growing number of older patients is becoming an essential topic for both nursing administrators and practitioners. I urge you to seize this educational and networking opportunity and join us in advancing the practice of nursing worldwide.

Professor Wipada Kunaviktikul
Dean and Professor
Faculty of Nursing



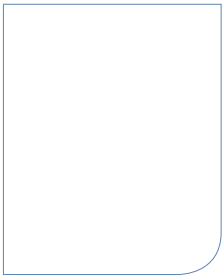
Fourth Military Medical University, China

On the occasion of opening of the 6th Hong Kong International Nursing Forum, on behalf of the nursing school of Fourth Military Medical University, the co-organiser, I extend my sincere congratulations. And also, please accept my heartiest congratulations to the 20th Anniversary to your school.

For the past 20 years, the Nursing School of The University of Hong Kong has been committed to the development of nursing profession, taken on new challenges and cultivated a large number of high-quality nursing talents. The Hong Kong International Nursing Forum, with the theme “Excellence in Nursing Practice, Education & Research across Life span”, will further promote the process of nursing theory, education, research and clinical practice, and have a profound impact on the nursing and medical service. In recent years, under the joint efforts, our two schools’ friendship continues to be strengthened, and the cooperation in all areas continues to be deepened. I believe our cooperative relations will achieve greater development in the future. We wish a great success of the 6th Hong Kong International Nursing Forum.

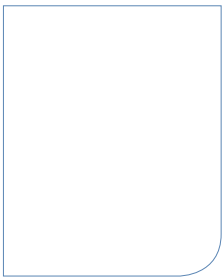
Professor Xu Sha Sha
Dean
School of Nursing

Congratulatory Messages from Co-organisers



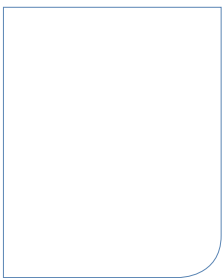
Kaohsiung Medical University, Taiwan

Professor Wang Hsiu Hung
Head and Professor
School of Nursing



Peking University, China

Professor Shang Shao Mei
Dean
School of Nursing



Sun Yat-Sen University, China

Professor Zhang Mei Fun
Dean
School of Nursing

Congratulatory Messages from Co-organisers



Xi'an Jiaotong University, China

On behalf of School of Nursing Xi'an Jiaotong University, I would like to express my sincerely congratulation for the opening of the 6th Hong Kong International Nursing Forum hosted by School of Nursing, The University of Hong Kong. I fully believe that the coming forum will provide a very good opportunity for all nursing educators and nurses nationally and internationally to share their academic expertise and explore new chance for collaboration in the field of nursing education, research and clinical practice.

We have a long time cooperation with the School of Nursing, The Hong Kong University. Hope we will find more ways for collaboration.

We are very honored to be one of the co-organisers of this Forum, we also believe that "coming together is the start, working together is success". We wish you have a very successful forum.

Professor Li Xiaomei

Dean
School of Nursing



Central South University, China

On the occasion of the 20th anniversary of the establishment of your school and the 6th Hong Kong International Nursing Forum in 2015, I would like to extend, on behalf of the XiangYa School of Nursing, Central South University, warm congratulations on the opening of the forum and high tribute and best wishes to all the teachers and students at your School. I wish this forum a complete success!

Professor Tang Si Yuan

Dean
Nursing School

Dalian University, China

Professor An Libin

Dean and Professor
School of Nursing

Congratulatory Messages from Co-organisers



Fudan University, China

On behalf of School of Nursing Fudan University, I would like to send my sincerely congratulation for the opening of the 6th Hong Kong International Nursing Forum hosted by School of Nursing, The University of Hong Kong. This Forum, like the five successful Forums in the past, provides a wonderful opportunity for nurse researchers, educators, and practitioners from different regions and countries to share their academic progress and explore chance for collaboration. Learning is an ongoing process and nursing can move forward by sharing and working together. We are very honored to be one of the co-organisers of this Forum.

Congratulation for the 6th Hong Kong International Nursing Forum and wish all the successfulness.

Professor Hu Yan
Dean
School of Nursing



Peking Union Medical College, China

On the occasion of the 6th Hong Kong International Nursing Forum, on behalf of the School of Nursing, Peking Union Medical College, I wish to extend my warm congratulation on the opening of the forum, and my sincere greetings to all the participants and to people from all walks of life who have made great contribution in the field of nursing.

Today, the nursing is experiencing a high speed development, nursing researchers and scholars make an increasingly important contribution to the evidence base which underpins professional nursing practice, the organization of nursing care and the advanced nursing education. This forum provide an excellent platform for active exchanges of the international healthcare knowledge, insights and scientific discovery.

I wish the 6th Hong Kong International Nursing Forum full success!

Professor Liu Huaping
Dean and Professor
School of Nursing



Shanghai Jiao Tong University, China

It gives me great pleasure to extend my heartiest congratulations to all the organizers and attendees for the success of the 6th Hong Kong International Nursing Forum and the 20th Anniversary of School of Nursing, The University of Hong Kong.

In the past two decades, the HKU School of Nursing has been committed to nurturing and promoting excellence in teaching, research and practice in nursing education. With the vision to lead and the mission to serve, the School has become one of the prestigious nursing schools nationally and internationally, attracting students by advanced teaching pedagogy and high quality nursing research.

I wish the HKU School of Nursing continue to march forward in nursing education towards ever greater achievements.

May the collaboration between the HKU School of Nursing and the SJTU School of Nursing continue to grow stronger, bringing greater benefits to both our students and patients.

Professor Zhang Yaqing
Dean and Professor
School of Nursing

Congratulatory Messages from Co-organisers



Third Military Medical University, China

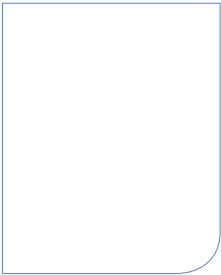
On behalf of the School of Nursing, Third Military Medical University, I would like to congratulate the School of Nursing, The University of Hong Kong, for holding the 6th Hong Kong International Nursing Forum while celebrating its 20th Anniversary.

Over the past twenty years, School of Nursing, HKU has made very important contributions to both the community and the society by providing platforms and promoting cooperation and exchanges between nursing academics and clinicians. Fortunately, we have been able to work together honestly and earnestly on both theoretical research and technical practice in the specific fields, which I believe, will finally meet our mutual expectations and lead to quality nursing care and education.

It is really a great honor to be a co-organiser of this inspiring and influencing scientific event. I sincerely hope that the forum will achieve a full success.

Professor Ren Hui

Dean
School of Nursing

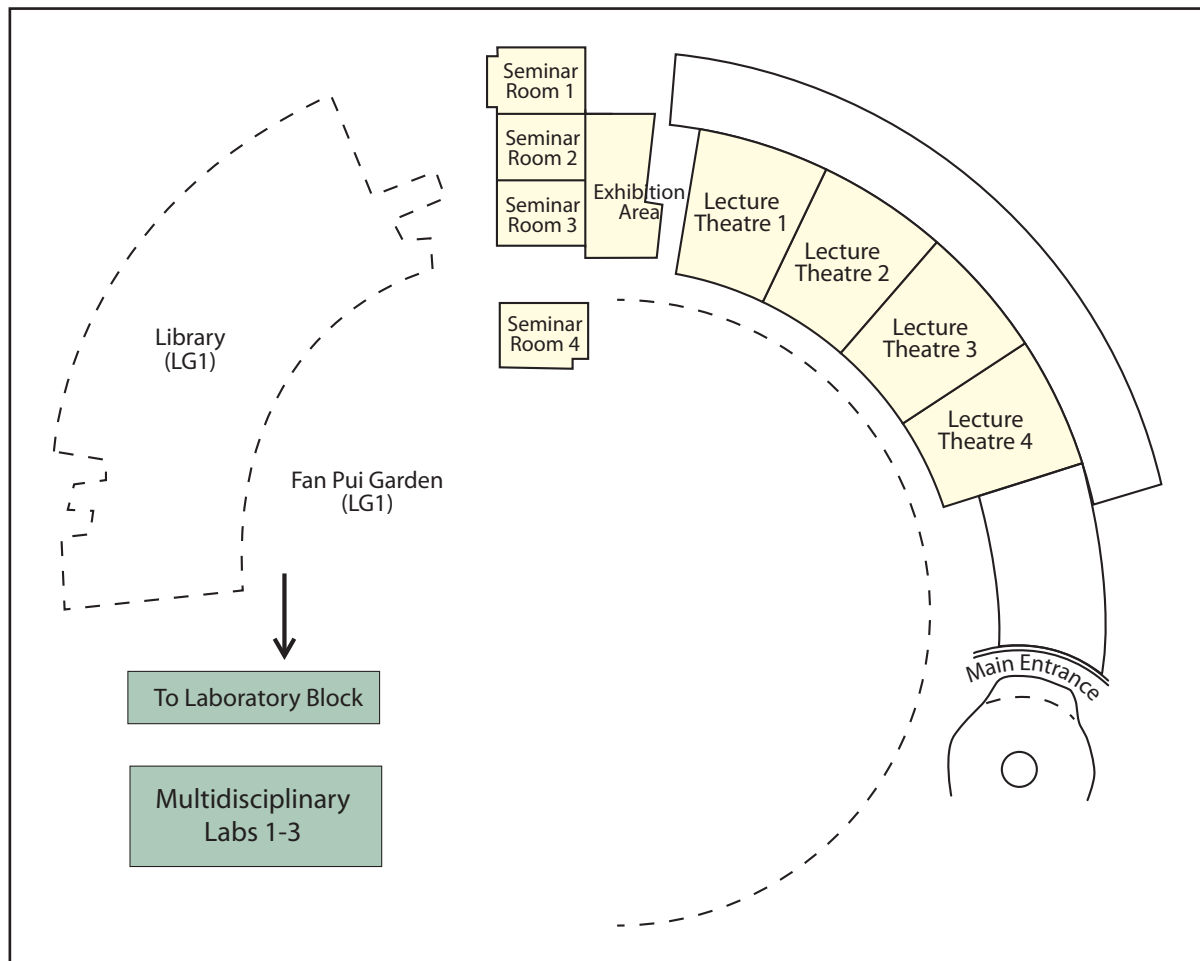


Zhejiang Chinese Medical University, China

Professor Sun Qiu Hua

Dean

William M.W. Mong Block, 21 Sassoon Road, Pokfulam, Hong Kong



REGISTRATION & ENQUIRY COUNTERS

Lobby, G/F William M.W. Mong Block, 21 Sassoon Road, Pokfulam

KEYNOTE LECTURES

Lecture Theatre 2 – 4, G/F, William M.W. Mong Block, 21 Sassoon Road, Pokfulam

CONCURRENT SESSIONS

Lecture Theatre 2 – 4, G/F, William M.W. Mong Block, 21 Sassoon Road, Pokfulam

POSTER PRESENTATIONS

Exhibition Area, G/F, William M.W. Mong Block, 21 Sassoon Road, Pokfulam

PREVIEW ROOM

Seminar Room 4, G/F, William M.W. Mong Block, 21 Sassoon Road, Pokfulam

TEA BREAK

Foyer outside Lecture Theatres, G/F, William M.W. Mong Block, 21 Sassoon Road, Pokfulam

LUNCHEON SYMPOSIUM

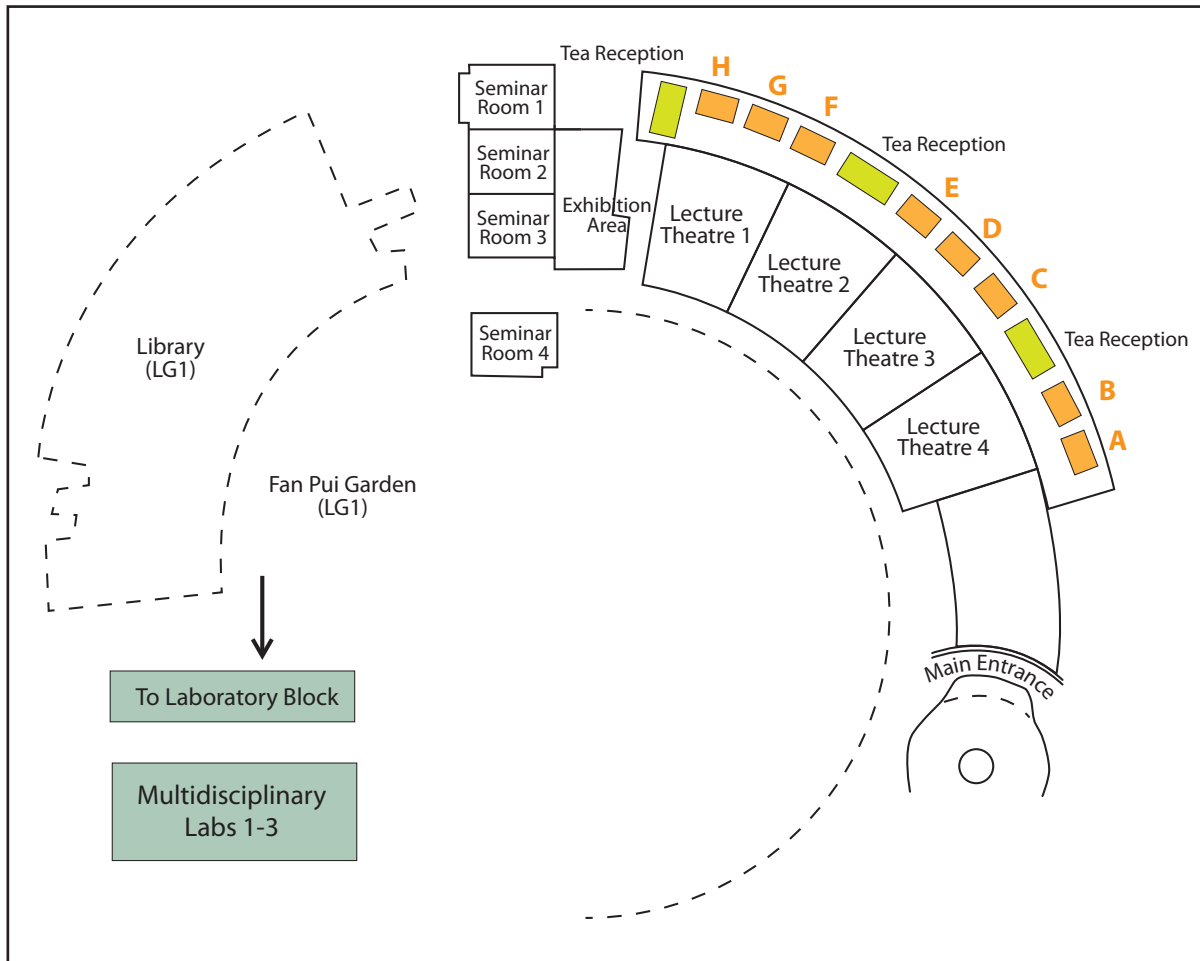
Seminar Room 5 -7, LG1/F, Laboratory Block, 21 Sassoon Road, Pokfulam

FORUM DINNER

The Hong Kong Country Club (188 Wong Chuk Hang Road, Deep Water Bay)

*Transportation is available to take delegates to the venue at 5:45pm at the main entrance of William M.W. Mong Block

William MW Mong Block, 21 Sassoon Road, Pokfulam, Hong Kong



10 December		11 December	
Booth A		School Programme Booth	
Booth B		Associated Medical Supplies Co. Ltd.	
Booth C	Efficiency Medical Products Co. Ltd.		
Booth D		Goodwin Health Care Ltd.	
Booth E	Wolters Kluwer (Lippincott Williams & Wilkins)		
Booth F		Nutricia Clinical (Hong Kong) Limited	
Booth G			
Booth H			

Programme at a Glance

10 December 2015

Time	Topic
8:30-9:00	Registration
9:00-9:30	Opening Ceremony
9:30-10:15	<p>Opening Keynote Address</p> <p>Professor Sophia Chan, Under Secretary for Food and Health, Government of the HKSAR</p>
10:15-10:45	Tea Reception and Poster Presentations
10:45-12:00	<p>Grace Tien Lecture</p> <p>Professor Cindy-Lee Dennis, Professor, University of Toronto, Canada Topic: Can We Prevent Postpartum Depression? Results from a Cochrane Systematic Review and Randomized Controlled Trial</p>
12:00-13:30	<p>Luncheon Seminar supported by The Hong Kong Society for Paediatric Immunology Allergy and Infectious Diseases</p> <p>Dr. Joshua Sung-chih Wong, Resident, Department of Paediatrics and Adolescent Medicine, Princess Margaret Hospital, Hong Kong Topic: Nursing Management of Common Paediatric Infectious Diseases</p> <p>Poster Presentations</p>
13:30-15:00	<p>Keynote Addresses</p> <p>Professor Ruth Anderson, Associate Dean for Research, School of Nursing, The University of North Carolina at Chapel Hill and Professor Emerita, School of Nursing, Duke University, US Topic: Adaptive Leadership for Chronic Illness and Care across the Life Span</p> <p>Professor Faith Gibson, Clinical Professor, Great Ormond Street Hospital for Children, UK Topic: Advancing Care, Advancing Nursing: How Do We Ensure a Balance between the Two</p>
15:00-15:30	Tea Reception and Poster Presentations
15:30-17:15	<p>Concurrent Sessions</p> <p>Concurrent Session I: Family and Community Health Concurrent Session II: Paediatric Nursing Concurrent Session III: Chronic Disease Prevention and Care (1)</p>
18:30-21:30	Forum Dinner

Programme at a Glance

11 December 2015

Time	Topic
8:30-9:00	Registration
9:00-10:30	<p>Keynote Address</p> <p>Professor Sanchia Aranda, Chief Executive Officer, Cancer Council Australia, Australia Topic: Population Perspectives on Patient-Centred Care in Cancer</p>
10:30-11:00	Tea Reception and Poster Presentations
11:00-12:30	<p>Panel Discussion</p> <p><i>Topic:</i> The Pursuit of Excellence in Nursing Practice/Education/Research: Challenges & Opportunities in the Next Decade</p> <p><i>Moderator:</i> Professor Agnes Tiwari, Head and Professor, School of Nursing, The University of Hong Kong, Hong Kong</p> <p><i>Panelists:</i> Professor Hugh McKenna, Pro-Vice-Chancellor (Research and Innovation), University of Ulster, UK Professor Libin An, Dean and Professor, School of Nursing, Jilin University, China Professor Linda Johnston, Dean, Lawrence S. Bloomberg Faculty of Nursing, University of Toronto, Canada Professor Wipada Kunaviktikul, Dean, Faculty of Nursing, Chiang Mai University, Thailand Dr Mei Krishnasamy, Professor of Cancer Nursing-Translational Research, Department of Nursing, University of Melbourne, Australia Dr Regina Cusson, Dean and Professor, School of Nursing, University of Connecticut, US</p>
12:30-14:00	<p>Luncheon Seminar supported by The Hong Kong Society for Paediatric Immunology Allergy and Infectious Diseases</p> <p>Dr. Chun Bong Chow, Honorary Clinical Professor, Department of Paediatrics and Adolescent Medicine, Li Ka Shing Faculty of Medicine, The University of Hong Kong, Hong Kong Topic: From Flu Vaccine to HPV Vaccine: What We Can Do From Nursing Perspective?</p> <p>Poster Presentations</p>
14:00-15:00	<p>Plenary Session</p> <p><i>Topic:</i> Public-Private Partnership in Nursing Practice</p> <p><i>Moderator:</i> Dr Marie Tarrant, Deputy Head, School of Nursing, The University of Hong Kong, Hong Kong</p> <p><i>Speakers:</i> Ms Susanna Lee, Manager (Nursing) /Chief Nursing Officer, Hospital Authority, Hong Kong Ms Manbo Man, Director of Nursing Services, Hong Kong Sanatorium & Hospital, Hong Kong</p>
15:00-15:30	Tea Reception and Poster Presentations
15:30-17:15	<p>Concurrent Sessions</p> <p>Concurrent Session IV: Maternal and Child Health Concurrent Session V: Chronic Disease Prevention and Care (2) Concurrent Session VI: Nursing Education</p>
17:15-17:30	<p>Award Presentation for Best Posters</p> <p>Closing Remarks</p>

Concurrent Sessions

Concurrent Sessions

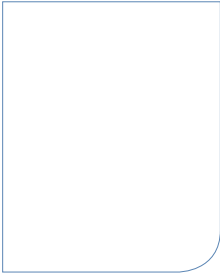
Concurrent Sessions

Concurrent Sessions

Concurrent Sessions

Concurrent Sessions

Keynote Speakers



Professor Sophia Chan

Under Secretary for Food and Health, Government of the HKSAR

Opening Keynote Address

10 December 2015 (9:30-10:15)



Professor Cindy-Lee Dennis

Professor, University of Toronto, Canada

Dr. Cindy-Lee Dennis is a Professor in the Lawrence S. Bloomberg Faculty of Nursing and the Faculty of Medicine, Department of Psychiatry at the University of Toronto. She holds a Canada Research Chair in Perinatal Community Health and was further appointed the Shirley Brown Chair in Women's Mental Health at Women's College Research Institute. She is currently the principal investigator of six large, multi-site studies related to breastfeeding exclusivity and perinatal depression. She is also examining the relationship between maternal and paternal postpartum depression and early child development and analyzing why immigrant women are at higher risk to develop postpartum depression. She is a co-investigator on sixteen other research projects concerning maternal and paternal health outcomes. She has over \$6 million in national research funding from the Canadian Institutes of Health Research (CIHR). She has over 125 peer-review publications and has lead six Cochrane systematic reviews. Lastly, she developed the Breastfeeding Self-Efficacy Scale, the most widely used breastfeeding measure in the world.

Grace Tien Lecture

10 December 2015 (10:45-12:00)

Can We Prevent Postpartum Depression? Results from a Cochrane Systematic Review and Randomized Controlled Trial

Depression is a widespread condition that has become a major public health priority. Although it affects individuals throughout the lifespan, research suggests an increased risk for women during the postpartum period. Based on evidentiary studies, major depression interferes with parenting quality and increases the risk of children to develop cognitive, behavioural, and emotional problems – and evidence is accumulating that these negative effects begin in the early infant environment. Epidemiological studies and meta-analyses of predictive studies have consistently demonstrated the importance of psychosocial and psychological variables as postpartum depression risk factors. While interventions based on these variables may be effective treatment strategies, theoretically they may also be used in pregnancy and the early postpartum period to prevent postpartum depression. Meta-analytic results of a recently updated Cochrane systematic review that assessed the effects of psychosocial and psychological interventions compared with usual perinatal care to reduce the risk of postpartum depression will be presented and practice implications discussed. Further, a large multisite randomized controlled trial evaluating the effect of telephone-based peer (mother-to-mother) support for the prevention of postpartum depression among high-risk mothers will be reviewed to demonstrate that preventive interventions can be beneficial and should be considered in perinatal health services.



Professor Ruth Anderson

Associate Dean for Research, School of Nursing, The University of North Carolina at Chapel Hill and Professor Emerita, School of Nursing, Duke University, US

Dr. Anderson's research focuses on chronic illness and care outcomes for older adults. Her research expertise includes using complexity science and the adaptive leadership framework in research about trajectories of chronic illness and care systems. She employs quantitative, qualitative, and mixed method study designs in her research program. She has been funded by numerous agencies to support her work and is in her 12th year of continuous funding from the National Institutes of Health (USA). Her major accomplishments have been to:

- Pioneer use of complexity theory and management science in nursing for analysis of relationships and management practices needed to provide high quality care to older adults in long-term care.
- Develop and test the CONNECT for Quality intervention to reduce falls in nursing homes (NIH/NINR; R01NR003178).
- Pioneer application of adaptive leadership theory derived from complexity science, in studying the intersection of chronic illness and care systems; is PI (with S. Docherty) for the NIH/NINR funded P-30 Center of Excellence in Adaptive Leadership for Cognitive/Affective Symptom Science.

Affiliations:

- Professor Emeritus, Duke University School of Nursing
- Associate Dean for Research, University of North Carolina at Chapel Hill

Keynote Address

10 December 2015 (13:30-15:00)

Adaptive Leadership for Chronic Illness and Care across the Life Span

The Adaptive Leadership framework supports nurses and health care providers' ability to mobilize patients and families to confront, adapt, and thrive, when facing difficult challenges of chronic illness. In the presentation, the author will describe Adaptive Leadership and the new model her research group developed, in which they apply the framework to patients and families facing chronic illness. The their model of chronic illness and symptom management, adaptive leadership is a perspective for studying trajectories of symptoms and developing better tools for patient-centered care. It also suggests new ways to develop the evidence base for extending patient-centered care through and beyond treatment decisions. This Adaptive Leadership perspective calls for methods in trajectory science that can help us understanding how patients and families navigate through disequilibrium, confront challenges, engage in problem-defining and problem-solving work, and share responsibility for their future. The author will present examples of data from studies focused on patients and families addressing chronic conditions such as chronic hepatitis C and cognitive impairment. Related methods will be briefly addressed. Implications for new strategies for primary, community, and long term care systems will be discussed.



Professor Faith Gibson

Clinical Professor, Great Ormond Street Hospital for Children, UK

Faith Gibson is a Clinical Professor of Children's and Young People's Cancer Care at Great Ormond Street Hospital for Children NHS Foundation Trust and London South Bank University.

Faith Gibson has over 25 years experience in children's cancer nursing: that includes periods in clinical practice, education and research. She took up her current post, which is a joint appointment between Great Ormond Street Hospital and London South Bank University in September 2009. Her main fields of research and supervision include:

- Improving process and outcomes of care for children/young people with cancer and their families.
- Improving assessment and management of symptoms.
- Improving skills of the nursing workforce to deliver cancer care.
- Improving survivorship care.

She has been influential in the expansion of the research evidence base for children's cancer nursing. She has presented at national and international conferences, and has edited four textbooks and published over 100 research publications. Faith continues to play an important and influential role in developing practice, through leadership and research, in the care of children and young people being treated for cancer. She would describe herself as a narrative researcher, constantly refining her skills in undertaking and evaluating participatory research with children and young people. She remains very active in her national professional group, and works collaboratively with other professional groups in the Children's Cancer and Leukaemia Group, as well as many international forums.

Keynote Address

10 December 2015 (13:30-15:00)

Advancing Care, Advancing Nursing: How Do We Ensure a Balance between the Two

I believe nursing has a significant role to play in changing the landscape of how clinical care is delivered. However we more often witness uncoordinated evolution of expanded roles, where nurses are being asked to take on new roles with little preparation, training/education or reward, and where unclear boundaries of practice exist, where accountability and responsibility lie, leaving some nurses vulnerable and in some cases patients potentially at risk. Career paths are becoming more certain, well at least on paper, but on the ground, and in practice some confusion remains, leading to multiple expectations and unrealistic views of what 'advancing practice' means, with 'others' directing what 'nursing' will look like in the future. So I want to spend some time clarifying what we are talking about in terms of nursing roles. I will draw on examples from the UK and elsewhere to offer a perspective on where I think we are now. I will distinguish between roles (job titles) and tasks and levels of practice and get at the core of what nursing can bring. Nurses need to lead on nursing developments, but also keep channels of communication open to other professions, to ensure seamless care is delivered to those in our care. We need to remain committed to our values and argue for what we want, based on evidence of what our service, that is, what our patients and families need. We will always face pressures to develop our roles, for all sorts of economic and political reasons, but when we look back, and the legacy we leave the next generation of nurses we must be confident in the decisions we have made that has resulted in us further advancing nursing.



Professor Sanchia Aranda

Chief Executive Officer, Cancer Council Australia, Australia

Honorary Professor Sanchia Aranda was appointed as CEO of Cancer Council Australia in August 2015. She currently holds academic appointments with the School of Health Sciences, University of Melbourne and the Faculty of Nursing, University of Sydney and is a research fellow at the Peter MacCallum Cancer Centre. She has more than 30 years experience in cancer control and has held prior roles in healthcare, government and tertiary education. For the last 20 years Sanchia has worked in international cancer control, with 16 years on the board of the International Society of Nurses in Cancer Care, including 4 as President (2006-2010). She is the President-elect for the Union for International Cancer Control. Her contributions to cancer control have been recognized nationally and internationally and in 2013 she was named the 4th Peter MacCallum Cancer Centre Distinguished Fellow for her contributions to Cancer Nursing.

Keynote Address

11 December 2015 (9:00-10:30)

Population Perspectives on Patient-Centred Care in Cancer

Patient Centred Care is often conceived as focused on the qualitative dimension of the interactions between patients and health professionals and the style of care delivery. This presentation will challenge individualist conceptions of patient-centred care by arguing that our current approaches support and indeed contribute to poorer outcomes for the most vulnerable populations that we serve. Through an examination of the impact of social determinants of health on outcomes for people with cancer it is possible to see that to be truly patient-centred we must begin with understanding the population of patients we serve and the mechanisms that lead to disadvantage. Tudor Hart (1971) argued that “the availability of good medical care tends to vary inversely with the need for it in the population served”. For nursing this challenges us not to focus only on the quality of the care we provide to the patient in front of us to look beyond to those who we routinely do not ‘see’. Further, in doing so we must adopt population thinking in understanding the impact of nursing practice.



Professor Hugh McKenna

Pro-Vice-Chancellor (Research and Innovation), University of Ulster, UK

Dr Hugh McKenna CBE is Pro Vice Chancellor for Research and Innovation at Ulster University. He has over 250 publications including 11 books and over \$14 million in grants. He has been made a Fellow of several academies and Royal Colleges. In 2008 he was made Commander of the British Empire (CBE) for his work on health and community and the award of Senior Distinguished Researcher. He sits on national/international committees for three charities, four research funding bodies and five editorial boards. In 2014, he was presented with a lifetime achievement Award for research at London's Institute of Psychiatry. He is a member of the International Scientific Advisory Board for King's London.

He is Chair of Innovation Ulster Limited and the Northern Ireland Association for Mental Health - the largest mental health charity in the province and holds a number of other non-executive positions. For instance, he is a non-executive member of the Patient and Client Council and chairs their Research Committee. He is on the Boards of NI Science Park, the Economic and Social Research Council's Administrative Data Research Centre and the Medical Research Council's Methodological Hub. He is also a board member of MATRIX, Northern Ireland's Science Industry Panel.

He chaired the 2014 UK Research Excellence Framework panel for nursing, allied health professions, pharmacy and dentistry, which made decisions on the allocation of many millions of pounds in research funding to UK universities. He was also recently an executive member of the UK Council of Deans of Health, chaired the Hong Kong Accreditation Panel for Health Sciences and the Swedish Health Sciences Research Council. He is an Adjunct/Visiting Professor at the University of Texas, USA, University of Moribor, Slovenia, University of Technology, Sydney, Australia, and Trinity College Dublin, Ireland and Head of the Visiting Committee at the Chinese University of Hong Kong

Panel Discussion

11 December 2015 (11:00-12:30)

The Pursuit of Excellence in Nursing Practice/Education/Research: Challenges & Opportunities in the Next Decade

Research assessment exercises take place in many countries. They are mainly carried out every 5 to 6 years and the results are used to allocate public funding for research. In subsequent exercises in the UK from 1986 to 2014, universities performance in terms of research excellence has improved considerably. In the most recent exercise called the Research Excellence Framework (REF), the Higher Education Funding Council introduced research impact. This is the first research assessment initiative in the world to attempt to measure, assess and reward such impact. The UK performed very well on this metric and an evaluation has shown the research carried out in the UK has had impact in every country of the world. There were other changes made in REF that strengthened the processes.

Hong Kong's Research Assessment Exercise has been modelled on the UK's RAE. It is likely that the REF may be a template for future exercise in Hong Kong. The speaker was a member of the 2001 assessment panel, chair of the 2008 panel and chair of the 2014 REF for nursing, midwifery, dentistry, pharmacy, biomedical sciences and allied health professions. He wishes to share some of the experiences with delegates and outline how researchers can improve their performance for Hong Kong's next RAE.



Professor Libin An

Dean and Professor, School of Nursing, Jilin University, China

Vice Director of National Higher Education Teaching Guidance Committee in Nursing Program of Ministry of Education, China. Member of Council of Chinese Nursing Association. Professor and Dean of School of Nursing, Dalian University. Adjunct professor of Jilin University, Soochow University and Xinjiang Medical University, respectively. Editor in Chief of Journal of International Nursing in China. Reviewer of Journal of Nursing Education Today (SCI). Got awards of Renowned Teachers from the government of Jilin province in China. Former Dean of School of Nursing, Jilin University.

Got Bachelor of Medicine in 1986 at Norman Bethune Medical University, Master of Medicine in 2001 at Jilin University and PhD in 2004 at Jilin University. As a visiting scholar sponsored by WHO studying at School of Public Health, Boston University, USA in 1998. As an exchange scholar sponsored by government of Canada and China working at School of Nursing, Dalhousie University in 2006.

Panel Discussion

11 December 2015 (11:00-12:30)

Facing the Aging Society of China, We Must Meet the Challenges

Fifteen years ago, China stepped into aging society. The characteristics of China's ageing population are huge population, fast growth, higher ratio of very elderly population, old before rich and few children. The data published by Ministry of Civil Affairs of China showed that old people aged 60 and above was 212 million at the end of 2014 (15.5% of the population). Experts predicted that elderly population will reach 300 million by 2025 and peak around 2055, reach 450 million people. From the 30s of this century to 2100, the elderly population will be not less than 350 million people, over 80-year-old person will remain at 100 million each year. During the past fifteen years period, old people aged 60 and above from 134 million (10.6% of the population) in 2000 to 212 million (15.5% of the population) at the end of 2014. From the year 2013 to 2014, the elderly population is a net gain of 10 million people. The time of aging process in China that the ratio of 65 years old and above population was from 7% to 14% is much shorter than the developed countries. The population aging process and economic development are not synchronized, industrialization behind aging process.

China's aging population produced a great impact on social economy, social security, medical and health resources and pension service demand. The number of labor force might further decrease as the development of aging society. On the contrary, the cost of production might further rise. The burden of social security has increased. More and more aging population will result in severe shortage of health care resources. Traditional family endowment has been weakening gradually and needs of social elderly care service has been increasing. How do we meet these challenges? The government investment and scientific supervision is fundamental. Improving the construction of social endowment service system is also necessary. As nursing educators, we should strengthen the training of endowment nurses and nursing personnel. As nursing practitioners, we should promote healthy aging in all the people.



Professor Linda Johnston

Dean, Lawrence S. Bloomberg Faculty of Nursing, University of Toronto, Canada

Professor Linda Johnston is Dean of the Lawrence S Bloomberg Faculty of Nursing at the University of Toronto. She is an Honorary Fellow of the Murdoch Children's Research Institute, Visiting Professor at Soochow University, China and Honorary Professor at The University of Melbourne, University of Hong Kong and Vanderbilt University, USA. She is a Fellow of the American Academy of Nursing and Editor of the journal Neonatal, Paediatric and Child Health Nursing. Her research interests include understanding the long term physical, social and emotional outcomes for babies and families experiencing surgery in the neonatal period and the impact of global health initiatives in neonatal care. Her policy interests include the development of clinical academic career pathways and the advancement of nursing research in the discipline.

Panel Discussion

11 December 2015 (11:00-12:30)

Nursing Education: The Impact of Partnership with Clinical Practice

As a practice-based discipline, a supportive clinical learning environment is critical to a student's success in a nursing program. In order to achieve the goals and objectives of a quality nursing education program, the roles and responsibilities of those educators based in both the academic and clinical settings need to be defined, and supported by a formalized system of communication between the institutions. A collaborative model of facilitated learning, with an emphasis on the value of interprofessional education and care delivery is proposed as one means by which nursing students will achieve the necessary skills they will require as a graduate nurse.

The Toronto Academic Health Science Network (TAHSN) is a unique model comprising the University of Toronto (UoT) and 13 affiliated hospitals, all participating in health and biomedical research and in the teaching of undergraduate and postgraduate medical and other health care professional students. The Lawrence S Bloomberg Faculty of Nursing has a longstanding history of partnering with the Vice Presidents (Nursing) of TAHSN, in the development of undergraduate, postgraduate and continuing professional development programs designed to meet nursing workforce needs; including advanced clinical practice, administration and leadership, and research. This presentation describes the partnership between the Faculty and TAHSN in preparing graduates for future careers in world class clinical, education, and research institutions.



Professor Wipada Kunaviktikul

Dean, Faculty of Nursing, Chiang Mai University, Thailand

Dr. Wipada Kunaviktikul is a Professor and the Dean of the Faculty of Nursing, Chiang Mai University, Thailand. She is the Director of Nursing Policy and Outcome Center (NPOC), the Head of the World Health Organization Collaborating Center for Nursing and Midwifery Development (WHOCC No. 203).

Dr. Wipada obtained her doctoral degree from the University of Alabama at Birmingham, USA, in 1994 and was a research fellow at the Harvard University School of Public Health, USA for one year. In 2013, she was inducted as a fellow of the American Academy of Nursing.

Dr. Wipada has over two decades of research experience, specifically in the areas of nursing administration, policy, health care system, and quality of care. She has served as the Chair of the Master Degree Program in Nursing Administration for the past 10 years, and is a member of the Doctoral Administrative Committee and is Chair of Graduate Studies at the Faculty of Nursing, Chiang Mai University. Her publications have been accepted by national and international journals, and she is invited to be speaker at national and international levels in the areas of health promotion, nursing education, research, partnership, leadership and administration.

She has also received several national and international awards e.g. ‘International Nurse Researcher Hall of Fame 2011’, Sigma Theta Tau International, Honor Society of Nursing, USA, The UAB School of Nursing’s Visionary Leader in 60th Anniversary Celebration, School of Nursing, The University of Alabama at Birmingham, USA, “National Distinguished Professor in Health Science Award 2010” Council of University Faculty Senate of Thailand. Besides, she has been a chair of four international conferences and more than 50 international trainings, and also several conferences arranged in Thailand.

Panel Discussion

11 December 2015 (11:00-12:30)

The Pursuit of Excellence in Nursing Practice/Education/Research: Challenges & Opportunities in the Next Decade



Dr Mei Krishnasamy

Professor of Cancer Nursing-Translational Research, Department of Nursing, University of Melbourne, Australia

Mei is Executive Director of Cancer Nursing and Allied Health at the Peter MacCallum Cancer Centre (Peter Mac) in Melbourne and Professor of Cancer Nursing-Translational Research, in the Department of Nursing at the University of Melbourne. Having trained as a nurse in the UK Mei developed her cancer nursing career, working at key cancer centres in the UK, before moving into a research role at the Institute of Cancer Research with Macmillan Cancer Relief in London. She moved to Australia with her family, taking up research and senior operational roles at Peter Mac where she became Director of the Department of Cancer Experiences Research under Prof Sanchia Aranda's mentorship. Mei's focus at Peter Mac has been her work with specialist cancer nurses and allied health clinicians to develop, implement and evaluate models of patient-centred care. More recently she has taken on Executive responsibility for delivering the Prevention and Wellbeing strategic direction for the organisation and shares responsibility for embedding patient experience initiatives and methodology across Peter Mac. She is chief investigator on several national and international research grants that focus on improving patient experiences of cancer and has a particular interest in the relationship between patient experience and health outcomes. She is President of the Clinical Oncology Society of Australia and a past President of the Cancer Nurses Society of Australia.

Panel Discussion

11 December 2015 (11:00-12:30)

The Pursuit of Excellence in Nursing Practice/Education/Research: Challenges & Opportunities in the Next Decade

My presentation will invite conference attendees to consider how the concept of excellence is understood in nursing practice, education and research. What does it mean to be an excellent nurse, nurse educator or researcher and what metrics might we apply to make visible excellence in nursing? By applying the concept of value to nursing care, an opportunity presents itself to consider where and how nurses can focus their efforts in practice, education and research to address challenges to the health of our communities.



Dr Regina Cusson

Dean and Professor, School of Nursing, University of Connecticut, US

Regina M. Cusson, PhD, NNP-BC, APRN, FAAN, has served as Dean and Professor for UConn's School of Nursing since fall of 2011. Prior to that appointment, she was Associate Dean for Academic Affairs and Advanced Practice for the school from 2007-2010, and has been a professor at the school since 1998. She is a certified neonatal nurse practitioner and coordinated the school's Neonatal Nurse Practitioner Program. Her federally-funded research studies have helped define practice standards in neonatal care. In 2008, the American Academy of Nursing made her a fellow in recognition of her contributions to nursing education and neonatal nursing.

Dean Cusson's research explores workforce issues for advanced practice neonatal nurse practitioners in the U.S. and Britain. She also coordinated the Faculty Special-Interest Group for the National Association of Neonatal Nurses. Serving as a consultant to neonatal practitioner programs throughout the U.S., Cusson has also served on numerous editorial boards, including the two major neonatal nursing journals: *Advances in Neonatal Care* and *Neonatal Network*.

From 1979 to 1998 Cusson was a faculty member at the University of Maryland, where she was director of the Neonatal Nurse Practitioner Program and chairperson for the School of Nursing's Maternal Child Health Nursing Department.

Cusson earned her bachelor's degree in nursing from St. Joseph College, Emmitsburg, MD, both her MS and PhD from the University of Maryland, and her post-graduate certification as neonatal nurse practitioner from the University of Pennsylvania.

Panel Discussion

11 December 2015 (11:00-12:30)

The Pursuit of Excellence in Nursing Practice/Education/Research: Challenges & Opportunities in the Next Decade

Innovation is an important part of nursing leadership in the 21st century. In fact, in *The Future of Nursing*, the Institute of Medicine recommends that schools of nursing "prepare and enable nurses to lead change to advance health" (p. 5).

Nurses are at the forefront of patient care, but seldom disseminate their knowledge beyond the bedside. Nurses often see a lack or a flaw in health care delivery. However nurses are not typically educated on how to improve the system or solve the unmet need. As part of a senior nursing leadership course, undergraduate students obtained direct and concrete experience conceptualizing and implementing an innovation to practice. The purpose of this project was to examine the nurse's role as a change agent in the health care system. A secondary goal was to explore the role of nurse entrepreneur.

This presentation will discuss outcomes of this creative method of teaching nursing leadership skills to senior level students and will identify ways to incorporate these skills first, through all levels of undergraduate education, and then into advanced graduate education. Professional nursing faces many challenges with global changes in health care. Preparing all levels of students for their roles as leaders requires new methods of education. Educators can make an investment in the future of nursing by cultivating a leadership and preparation as change agents into nursing education.



Ms Susanna Lee

Manager (Nursing) /Chief Nursing Officer, Hospital Authority, Hong Kong

Ms Susanna Lee received her nursing training in Hong Kong and midwifery training in United Kingdom. She has practiced nursing in Hong Kong and Australia for more than 30 years. She attained her Bachelor in Business Administration (Hons) and Master of Nursing in The Chinese University of Hong Kong.

Ms Lee's working experiences emphasize on nursing administration and Paediatric nursing. She is currently the Chief Nursing Officer (CNO) of the Hospital Authority (HA) Head Office, her main work portfolio includes nursing service operations, professional and specialty development, and project planning and management in HA. She oversees the Specialty Advisory Groups of 24 nursing specialties, the accreditation of HA nurse clinics, corporate overseas training for nurses, and community nursing services etc. Clinically, Ms Lee has rich experiences in Paediatric nursing, before being the CNO; she was the Department Operations Manager of Paediatric and Adolescent Medicine Department and Developmental Disabilities Unit in Caritas Medical Centre.

Ms Susanna Lee is currently the Chairman of the Registered Nurses (Sick Children) Examination Subcommittee and the Education Committee member of the Nursing Council of Hong Kong; former Council member of the Midwives Council of Hong Kong. Besides, she actively participates in the professional development activities. As the Founding President of The Asia Pacific Paediatric Nurses Association currently, she dedicates herself to promote child health and Paediatric nursing in the Asia Pacific Region and the transdisciplinary team approach between health care professionals.

Plenary Session

11 December 2015 (14:00-15:00)

Public-Private Partnership in Nursing Practice

Inheriting the values of the Hospital Authority (HA), the Nursing Services Department (NSD) highly regarded its partnership with the private sectors in providing quality nursing care to the community.

As such, a common platform "Public Private Nurses Leaders Meeting (PPNLM)" has been formed since 2004 with affiliation of nurse leaders from the Department of Health (DH), HA, and private hospitals in Hong Kong. For over a decade, regular meetings were held to facilitate mutual understanding, promote communication and foster collaboration for the provision of quality services in the community. In 2013, nursing leaders from both public and private sectors worked together to review the "Guides to Good Nursing Practice" under the "Code of Conduct and Practice" of The Nursing Council of Hong Kong. Furthermore, the HA also provided a number of nursing education and training programs for nurse learners from DH and private hospitals to enhance their nursing practices.

To successfully implement Public-Private Partnership (PPP), it is essential that engagement and participation is diligently earned from all partners. Throughout these years, HA has established a long term relationship and formed a strong bonding with the private and non-governmental healthcare providers. The HA will actively exploring more clinical PPP opportunities and continue working closely together with our partners to achieve a higher level of excellence in nursing practices.



Ms Manbo Man

Director of Nursing Services, Hong Kong Sanatorium & Hospital, Hong Kong

Ms Man has been working in the public and private sectors for over 30 years. After working as Matron for 10 years at Hong Kong Sanatorium & Hospital, she was appointed Director of Nursing Services in 2003. Ms Man is currently in charge of all nursing services of the Hospital, ranging from service planning, service development to day-to-day operation of both clinical nursing and educational divisions. Since 2000, she has been one of the key personnel in leading the Hospital through the 5 biennial accreditations conducted by the UK Trent Hospital Accreditation and the Organisation Wide Survey of the Australian Council of Healthcare Standards (ACHS) in 2009. She is now the Chairman of ACHS (HK) Program Support Committee for Hospital Accreditation Scheme.

Ms Man has been serving various statutory Boards and Councils. She was the Chairman of the Hong Kong Midwives Council (1997 - 2005), the Chairman of the Education Committee of the Nursing Council of Hong Kong from (1997 - 2002), the Chairman of Assessment of Chinese Medicine Degree Courses of the Chinese Medicine Practitioners Board, the Chinese Medicine Council of Hong Kong (2005 - 2011) and the Council Member of the Chiropractors Council of Hong Kong (2006 - 2012).

Plenary Session

11 December 2015 (14:00-15:00)

Public-Private Partnership in Nursing Practice

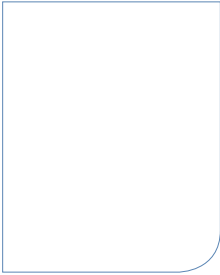
In March 2008, the HKSAR Food and Health Bureau published a Health Reform Consultation Document entitled “YOUR HEALTH YOUR LIFE”. It stated in paragraph 3.1 that public-private partnership (PPP) “...will make better use of the resources available in the community, and facilitate training and sharing of experience and expertise”. This idea was elaborated in paragraph 3.4 of the same document, which suggested that “the involvement of the private sector in the setting up of medical centres of excellence and the engagement of private sector doctors in public hospitals would create opportunities for collaboration and cross-fertilization of experience between public and private sector medical professionals...”, which will “facilitate skill transfer and cross-sector training”.

Since the publication of this consultation documents, PPP of medical professionals has been making great strides in the provision of professional training and clinical services. While PPP is set to bring substantial benefits to the healthcare services as well as the professional development of medical professionals, it is still absent in the nursing sector. In this sharing session, the speaker will explore the opportunities for and feasibility of PPP in the nursing profession. It will also discuss the possible scope and advantages of PPP in view of the future development of the nursing sector.

Lunch Seminar supported by The Hong Kong Society for Paediatric Immunology Allergy and Infectious Diseases

10 December 2015 (12:00-13:30)

Nursing Management of Common Paediatric Infectious Diseases



Dr. Joshua Sung-chih Wong

Department of Paediatrics and Adolescent Medicine, Princess Margaret Hospital, Hong Kong

11 December 2015 (12:30-14:00)

From Flu Vaccine to HPV Vaccine: What We Can Do From Nursing Perspective?



Dr. Chun Bong Chow

*Honorary Clinical Professor, Department of Paediatrics and Adolescent Medicine,
Li Ka Shing Faculty of Medicine, The University of Hong Kong, Hong Kong*

Concurrent Sessions Abstract

List of Poster Presentation

Chronic Disease Prevention and Care

- Abst 12 **Core Muscle Activation During TRX Suspension Exercises With And Without Kinesio Taping In Adults: Implications For Chronic Low Back Pain Rehabilitation**
Shirley S.M. Fong
Institute of Human Performance, The University of Hong Kong, Pokfulam, Hong Kong
- Abst 16 **Blame Attributions towards Patients with Different Cancers: A Cross-sectional Study among Chinese Oncology Nurses**
Linda D.L. Wang
The University of Hong Kong, Hong Kong
- Abst 17 **The Effectiveness of Internet-Based Hypertension Self-Management Program on Non-Medical University Teachers in Hunan Province**
Jinfeng Ding¹, Hongjuan Hu², Can Gu¹, ZeMin Kuang³, Siyuan Tang¹
¹Xiangya School of Nursing, Central South University, Changsha, Hunan, China, ²School of Nursing, University of South China, Hengyang, Hunan, China, ³Beijing AnZhen Hospital, Capital Medical University, Beijing, China
- Abst 18 **Living with smoker(s) was associated with lower likelihood of quitting: Hong Kong Lifestyle and Mortality study**
Zhi-Ming Mai¹, Sai-Yin Ho¹, Ching-Man Lo¹, Man-Ping Wang², Tai-Hing Lam¹
¹School of Public Health, The University of Hong Kong, Hong Kong, ²School of Nursing, The University of Hong Kong, Hong Kong
- Abst 19 **Case Study – Nasogastric Tube Transition For Stroke Patients**
Ka Yan, Amy Yeung, Lai Ming Chan, So Sum Lo, Kin Tung, Francis Chan, Suk Yee Liu
HKSKH Welfare Council, Hong Kong
- Abst 32 **Interplay among Self- management Barriers and Socio- demographic, Clinical, Patient- centered Outcomes in Patients with Type 2 Diabetes**
Li Cheng¹, Janet Sit¹, Doris Leung¹, Xiaomei Li², Yuning Wu²
¹The Chinese University of Hong Kong, Shatin, Hong Kong, ²The Xi'an Jiaotong University, Xi'an, China
- Abst 42 **Predictors and Consequences of Presenteeism amongst Physicians and Nurses: A Systematic Literature Review**
Nga Man Juliana Lui, Chi Kin Chow, Janice Johnston
¹The University of Hong Kong, Hong Kong
- Abst 57 **From the Lens of Older Adults with Diabetes or Hypertension: Barriers and Facilitators to Physical Activities through Photovoice**
Twiggy Y.H Wong¹, Wai Ming Tam², Perick L.C Wong², Michael Tse^{3,5}, P.H. Chau⁴, Isaac Leung⁴, Angela Y.M. Leung⁴
¹Hong Kong Sheng Kung Hui Western District Elderly Community Centre, HK, ²Hong Kong Sheng Kung Hui Welfare Council Ltd, HK, ³Institute of Human Performance, HKU, HK, ⁴School of Nursing, HKU, HK, ⁵The Active Health Clinic, HKU, HK
- Abst 75 **End-of-life Care in Advanced Cancer Patients Died in Hospital: A Retrospective Study**
Juanjuan Zhao, Liming You
School of Nursing, Sun Yat-sen University, Guangzhou, Guangdong Province, China
- Abst 79 **The Gender Difference Study on Patients with ACS in Onset and Identification of Symptoms, Reason of Seeking Medical Service**
Libin An, Wentao Li, Hongling Shi, Xiaohua Zhou
School of Nursing, Dalian University, Dalian, China
- Abst 111 **Differential Influence of Isoflavone Intake on the Risk of Breast Cancer Recurrence Related to Receptor Status**
Yingwei Fan, Cuiting Liu, Lili Zhang
Southern Medical University, GuangZhou, China

List of Poster Presentation

Abst 120	<p>The Stress Level and the Prevalence of Constipation among Clinical Nurses in Hong Kong <u>Yuk Pui Wong</u>, Ching Man Lam, Shun Yi Lau, Hei Man Ng, Pak Yin Siu, Sui Ting Siu, Sze Wing Sun, Wai Piu Yip, Chung Hin Yuen, Mei Kuen Li <i>The Open University of Hong Kong, Hong Kong</i></p>
Abst 123	<p>Factors Predicting Weight Change among Chinese Adults in Hong Kong <u>Man Ping Wang</u>¹, Yongda Wu¹, Lai Ming Ho², Sai Yin Ho², Tai Hing Lam² ¹<i>School of Nursing, University of Hong Kong, Hong Kong</i>, ²<i>School of Public Health, The University of Hong Kong, Hong Kong</i></p>
Abst 124	<p>Effectiveness of a Workplace Intervention to Promote Smoking Cessation in Hong Kong <u>Yi Nam Suen</u>¹, Wai Fung Chan¹, Man Ping Wang¹, William Ho Cheung Li¹, Oi Sze Lau², Sophia Siu Chee Chan¹, Tai Hing Lam³ ¹<i>School of Nursing, The University of Hong Kong, Hong Kong</i>, ²<i>The Lok Sin Tong Benevolent Society, Kowloon, Hong Kong</i>, ³<i>School of Public Health, The University of Hong Kong, Hong Kong</i></p>
Abst 125	<p>HKU Women Smoking Cessation Hotline - Smoker Characteristics and Quit Rate <u>William Ho Cheung Li</u>¹, Sophia Siu Chee Chan¹, Wai Fung Chan¹, Christina Oi Bun Lam¹, Man Ping Wang¹, Tai Hing Lam² ¹<i>School of Nursing, The University of Hong Kong, Hong Kong</i>, ²<i>School of Public Health, The University of Hong Kong, Hong Kong</i></p>
Abst 133	<p>An Evidence-based Guideline To Enhance Adherence to Treatment for Primary Open-angle Glaucoma <u>Kwan Ha Li</u>¹, Po Tai Chan² ¹<i>HKSH, Hong Kong</i>, ²<i>HKU, Hong Kong</i></p>
Abst 141	<p>Effects of Progressive Muscle Relaxation Training in Lung Cancer Patients Undergoing Chemotherapy <u>Xia Zhang</u>¹, Yu-Fang Guo¹, Liu-Yi Zhang¹, Cui-Yu Bao², Ju-Ying Luo², Jing-Ping Zhang¹, Ruth McCorkle³ ¹<i>Xiang Ya School of Nursing, Central South University, Changsha, China</i>, ²<i>School of Nursing, Hubei University of Science and Technology, Xianning, China</i>, ³<i>School of Nursing, Yale University, New Haven, USA</i></p>
Abst 142	<p>Incidence and Predictors for Cardiovascular Disease in Hong Kong Diabetic Patients <u>Eric YF WAN</u>, Daniel YT Fong, Colman SC Fung, Anca KC Chan, Karina HY Chan, Cindy LK Lam <i>The University of Hong Kong, Hong Kong</i></p>
Abst 150	<p>A Decade After: Stigma and Discrimination Among People Living with HIV (Manila Central University College of Nursing EDSA, Caloocan City, Philippines) <u>Rosario Seniorin</u> <i>Manila Central University College of Nursing, EDSA, Caloocan City, Metro Manila, The Philippines</i></p>
Abst 161	<p>Primary care providers' perceived barriers and facilitators to implementing chronic disease management in primary care settings in Hunan, China: A qualitative research <u>Chongmei Huang</u>, Mei Sun, Siyuan Tang <i>Central South University, Changsha, China</i></p>
Family and Community Health	
Abst 22	<p>The Impacts of Infertility on Couples, Gender Differences – A Systematic Review <u>Bronya Luk</u> <i>School of Nursing, Li Ka Shing Faculty of Medicine, The University of Hong Kong, Hong Kong</i></p>
Abst 24	<p>Trust as a Friend: The Experience of Professional Identity Formation in Community Nurses <u>Mee Kie Maggie Chan</u>¹, Engle Angela Chan² ¹<i>School of Nursing, The University of Hong Kong, Hong Kong</i>, ²<i>School of Nursing, The Hong Kong Polytechnic University, Hong Kong</i></p>
Abst 34	<p>Current Situation and Countermeasure of Community Health Education in the Elderly <u>Qirong Chen</u>, Siyuan Tang <i>Xiangya Nursing School of Central South University, Hunan, China</i></p>

List of Poster Presentation

- Abst 84 **Empowering Chinese Abused women: A Community-Based Participatory Approach**
Elaine Chow Hoi Yee
The University of Hong Kong, Hong Kong
- Abst 85 **Linguistic and Psychometric Evaluation of the Chinese Weinstein's Noise Sensitivity Scale**
D. Y. T Fong, N. Takemura, J. Y. H Wong
The University of Hong Kong, Hong Kong
- Abst 86 **Multidisciplinary Primary Care Program in Patients with Chronic Low Back Pain**
SHAM Laimei
The University of Hong Kong, Hong Kong
- Abst 93 **Mental Health And Loneliness Level Between Pet Owners And Non-pet Owners In A sample Of Hong Kong Tertiary Students: A Pilot Study**
King Ying Lee, Sau Fong Leung, Ka Ying Wong, Kwan Hung Ng, Ching Kwan Ip, Ka Ying Li, Hoi Yan Ngan, Mei Wa Kung
The Hong Kong Polytechnic University, Hong Kong
- Abst 108 **Patient Navigation Program for Breast Cancer Patients: A Systematic Review**
Wing Yee Tun, Angela Yee Man Leung
The University of Hong Kong, Hong Kong
- Abst 112 **Economic Violence and Quality of Life Outcomes among Women: A Review of the Literature**
Jessie Ho Yin Yau, Janet Yuen Ha Wong, Daniel Yee Tak Fong
The University of Hong Kong, Hong Kong
- Abst 113 **Incentive-Based Smoking Cessation via Quit to Win Contest (2Abst 9-2014) in Hong Kong**
Yee Tak Derek Cheung¹, William Ho Cheung Li¹, Man Ping Wang¹, Christina Oi Bun Lam¹, Antonio Kwong², Vienna Lai², Sophia Siu Chee Chan¹, Tai-hing Lam¹
¹*The University of Hong Kong, Hong Kong*, ²*Hong Kong Council on Smoking and Health, Hong Kong*
- Abst 116 **The Association between Haemoglobin Level and Lifestyle Characteristics of Chinese Blood Donors in Hong Kong**
Shang Lee, Ching Yu Luk, Tsz Ching Kong, Hiu Fu Lam, Tsz Ching Wan, Ka Ki Man, Ho Wun Kam, Kai Yan Law, Tsz Wah Ho, Sau Fong Leung
The Hong Kong Polytechnic University, Hong Kong
- Abst 119 **The Use of Social Networking Applications of Smartphone and Its Associated Sexual Health and Sexual Behavior in Lesbian, Gay, Bisexual, and Transgender (LGBT) Populations: A Systematic Review**
Edmond Pui Hang Choi, Janet Yuen Ha Wong, Daniel Yee Tak Fong
The University of Hong Kong, Hong Kong
- Abst 127 **Translation and Validation of the Chinese Version of the Pain Sensitivity Questionnaire**
Xiaoli Quan¹, Daniel Yee Tak Fong¹, Angela Yee Man Leung¹, Qin Liao², Ruth Ruscheweyh³, Pui Hing Chau¹
¹*School of Nursing, Li Ka Shing Faculty of Medicine, The University of Hong Kong, Hong Kong*, ²*The Third Xiangya Hospital of Central South University, Changsha City, Hunan Province, China*, ³*Department of Neurology, University of München, Germany*
- Abst 136 **The study of hospice care knowledge status and attitudes of community nurses in Beijing.**
Xinyi Xu¹, Tingna Liang²
¹*The University of Hong Kong, Hong Kong*, ²*Peking Union Medical College, Beijing, China*
- Abst 138 **Development of a Patient-reported Outcome Measure of Physical Functions of Patients with Impairments of Lower Extremity - A Delphi Study**
Raymond Tsang, Janet Wong, Patsy Chau, Daniel Fong
School of Nursing, The University of Hong Kong, Hong Kong

List of Poster Presentation

- Abst 145 **Community Assessment of a Local District: Kwun Tong in Hong Kong**
Chan Ka Ling, Cheung Wai Man, Chow Cheun Ching, Kwok Man Yi, Li Ka Yee, Sze Sha Sha, Tang Chui Ling, Wong Yuen Shan, Yau Sin Yee
The University of Hong Kong, Pokfulam, Hong Kong
- Abst 146 **Development and model-based evaluation of a train-the-trainer workshop for the large preventive positive psychology Happy Family Kitchen Project in Hong Kong**
Agnes Lai¹, Moses Mui², Alice Wan¹, Sunita Stewart³, Tai-hing Lam¹, Sophia Chan⁴
¹*School of Public Health, The University of Hong Kong, Hong Kong*, ²*The Hong Kong Council of Social Service, Hong Kong*, ³*Department of Psychiatry, University of Texas Southwestern Medical Center at Dallas, Dallas, Texas, Hong Kong*, ⁴*School of Nursing, The University of Hong Kong, Hong Kong*
- Abst 159 **Eating Habits of Construction Workers in Hong Kong**
 Kin Cheung, Kim Leong Chan, Chun Wai Chan, Ka Kit Cheung, Wing Yan Lam, Ka Fai Leung, Sui Ling Li, Ka Yan Mak, Shuk Ting Mak, Ka Cheung Yeung, Wing Yiu Yu
The Hong Kong Polytechnic University, Hong Kong

Maternal and Child Health

- Abst 55 **To Study the Satisfaction Rate of Mother's Receiving Breastfeeding Support and Midwives Who Provide It**
Rajwinder Kaur
Matilda International Hospital, The Peak, Hong Kong
- Abst 58 **Analysis of Glucose Tolerance Screening and its Related Factors of 2588 Pregnant Women**
Guo Huijie¹, Wang Jiping²
¹*School of Nursing Fudan University, Shanghai, Xuhui, China*, ²*Fudan University Jinshan Hospital, Shanghai, Jinshan, China*
- Abst 62 **Breastfeeding Mothers' Perceptions on Breast Milk Donation in Hong Kong**
Joyce Chung Yin Leung^{1,2}, Shirley Siu Ming Fong²
¹*The Open University of Hong Kong, Hong Kong*, ²*The University of Hong Kong, Hong Kong*
- Abst 73 **Effectiveness of Massage in Alleviating Labour Pain**
Wing Yi Kaness Ching
The University of Hong Kong, Hong Kong
- Abst 81 **A Mutual Benefit for New Parents and Mother-volunteer from the 'Becoming Parents' Programme: A Qualitative Study**
Veronica, S.F. Lam¹, Daniel, Y.T. Fong¹, Helina Yuk², Polly Pang², W.C. Leung³, K.M. Chow⁴, Richard Tolman⁵, Felix, K.H. Yuen¹, Agnes Tiwari¹
¹*The University of Hong Kong, Hong Kong*, ²*HK SKH Lady MacLehose Centre, Hong Kong*, ³*Kwong Wah Hospital, Hong Kong*, ⁴*Princess Margaret Hospital, Hong Kong*, ⁵*University of Michigan, USA*
- Abst 106 **Pubertal Stage: Prediction of Cardiometabolic Risk by BMI and Waist Circumference**
Noel PT Chan
The University of Hong Kong, Hong Kong
- Abst 132 **The Education and Management of Midwives in China : A Systematic Review of the Past 10 Years:2005-2015 - Midwives Should Provide Midwifery Care in the Community**
Xiaoli Liu, Yao Wang, Guoping He
Xiangya School of Nursing of Central South University, China
- Abst 144 **Investigation on Knowledge, Attitude and Practice (KAP) about Contact Lenses among the Students of College in Beijing Province**
Liang Tingna, Xu Xinyi
Peking Union Medical College School of Nursing, Beijing, China

List of Poster Presentation

Nursing Education

- | | |
|----------|--|
| Abst 13 | <p>Quality Enhancement Program: How to Nurture a Delirium-Caring Culture in an Acute Geriatric Setting?
 <u>Tang L.N.</u>, Chan S.W., Li H.S., Chen M.C, Cheng K.K
 <i>United Christian Hospital, Hong Kong</i></p> |
| Abst 29 | <p>Head Nurse Economic Management Practice: A Qualitative View of Performance in Changsha, China
 <u>Bai Yang</u>, Liu Dan, Tang Siyuan
 <i>Central South University, ChangShaina</i></p> |
| Abst 35 | <p>Patients and Families Perceptions of Quality Communication Pattern for Healthcare Professional Towards End of Life Care at Hospital Setting
 <u>Cheng Choi Kuen Karen</u>, Tiwaria Aggi
 <i>Hospital Authority, Hong Kong</i></p> |
| Abst 45 | <p>Training Ground for Future Trainer by Self-Learning Training Program
 <u>Ng Sze Ka</u>, Chim Ki Man, Tung Yuk Yu
 <i>Department of Paediatric & Adolescent Medicine, United Christian Hospital, Hong Kong</i></p> |
| Abst 47 | <p>Nursing Education as Part of Value-Adding Staff Knowledge Retention Assessment
 <u>Chan Cecilia</u>
 <i>Matilda International Hospital, The Peak, Hong Kong</i></p> |
| Abst 60 | <p>Discussion on the Status and Development Trend of Our Nursing Master Education
 <u>Liao Xiaoli</u>, Luo Junfei
 <i>Central South University Xiangya School of Nursing, Changsha Hunan, China</i></p> |
| Abst 94 | <p>Evidence-Based Practice Knowledge/skills, Attitudes, and Practice of Online Graduate Nursing Students
 <u>Wilaiporn Rojjanasrirat</u>, Jan Rice
 <i>Graceland University, Independence, Missouri, USA</i></p> |
| Abst 98 | <p>Human Papillomavirus (HPV) Infection and Vaccines: Knowledge, Attitude and Perception among Female Nursing Students in Mainland China
 <u>Kaidi Gao</u>, Olivia Fung
 <i>The Hong Kong Polytechnic University, Hong Kong</i></p> |
| Abst 101 | <p>Clinical Work Content and Education Research of Community Health Nurse in China.
 <u>Jinnan Xiao</u>, Siyuan Tang, Jinfeng Ding, Yang Bai, Qirong Chen
 <i>Central South University, Changsha, China</i></p> |
| Abst 110 | <p>Evaluating Clinical Preceptors' Competencies Among Thai Registered Nurses
 <u>Renu Mingpun</u>¹, Boonchom Srisa-ard¹, Apinya Jumpamool²
 ¹Maharakham University, Maharakham, Thailand, ²Khonkaen University, Khonkaen, Thailand</p> |
| Abst 122 | <p>The Impact of Extended Nursing Care on Self-Care Agency and Its Effect in Patients with Intubation of T-tubes
 <u>Zhang Honghui</u>
 <i>Hunan Provincial People's Hospital, Changsha, China</i></p> |
| Abst 131 | <p>Fall Prevention Education Program for Nurses in the Accident and Emergency Department (AED), United Christian Hospital (UCH) 2013
 <u>Kai Chiu Chan</u>, Wai Yee Chan, Ping Li
 <i>Hospital Authority, Hong Kong</i></p> |
| Abst 151 | <p>To BE or not to BE?: Reflective Mindset of Nursing Deans Towards the Shift to OBE
 <u>Agnes Raymundo</u>
 <i>Manila Central University College of Nursing, EDSA, Caloocan City, Metro Manila, The Philippines</i></p> |
| Abst 152 | <p>To Think Like a Nurse : A Case Study Teaching-Learning Activity
 <u>Agnes Raymundo</u>
 <i>Manila Central University College of Nursing, EDSA, Caloocan City, Metro Manila, The Philippines</i></p> |

List of Poster Presentation

Abst 153	Striking the Balance: Research Productivity among Clinical Instructors <u>Agnes Raymundo</u> <i>Manila Central University College of Nursing, EDSA, Caloocan City, Metro Manila, The Philippines</i>
Abst 155	Nursing Care Management Learning Settings in Relation to Student's Readiness to Learn: A Basis for an Improved Instructional Program in Nursing <u>Melvin Miranda</u> <i>Manila Central University College of Nursing, EDSA, Caloocan City, Metro Manila, The Philippines</i>
Abst 156	Application of Oxygen Jet Atomization in Artificial Airway Humidification of Patients with ICU <u>Shiyang TAN</u> , Hui Luo, Yihui She, Jinyu Tang <i>The First Hospital Huaihua, Huaihua, Crane Area, China</i>
Abst 160	Depression, Anxiety and Symptoms of Stress among Baccalaureate Nursing Students in Hong Kong: A Cross-sectional Study Teris <u>Cheung</u> , Man Ying Ng, Siu Yi Wong, Kit Yi Wong, Ka Yu Wong, Lap Yan Law, Yuk Ki Karen, Man Tik Tong <i>The Hong Kong Polytechnic University, Hong Kong</i>
Others	
Abst 44	Systematic Review on Perioperative Music Therapy for Surgical Patients to Reduce Postoperative Pain and Anxiety <u>Kwong Man Chun</u> <i>The University of Hong Kong, Hong Kong</i>
Abst 76	The Research of Blind Nasoenteric Feeding Tube Placement in Surgical Critically Ill Patients <u>Yanhui Liu</u> , Zeya Shi <i>The First Affiliated Hospital of Hunan Normal University, Changsha, Hunan, China</i>
Abst 162	Establishing a Common Metric among Multiple Patient-Reported Mental Health Outcome Measures in a Chinese Clinical Sample <u>Maggie Y. Zhao</u> ¹ , Wai Chan ² , Barbara C. Y. Lo ¹ ¹ <i>The University of Hong Kong, Hong Kong</i> , ² <i>The Chinese University of Hong Kong, Hong Kong</i>
Paediatric Nursing	
Abst 14	Psychological Pre-Procedure Preparation for Paediatric Patient <u>Ng Sze Ka</u> , Chim Ki Man, Wan Wing Yin, Yip Siu Fung <i>United Christian Hospital, Hong Kong</i>
Abst 23	The Effectiveness of a Transition Care Program from Child to Adult System for Adolescents with Diabetes Mellitus Type 1 and 2 <u>Lau Sau Lai</u> , Ma Po King, Wu Suet Heung, Yeung Shu Ha, Leung Wai Yin <i>Department of Paediatric and Adolescent Medicine, United Christian Hospital, Hong Kong</i>
Abst 39	A Systematic Review of Massage for Symptom Relief in Children with Cancer <u>Fung Yan Au Yeung</u> <i>The University of Hong Kong, Hong Kong</i>
Abst 46	Family Centered Care Project in Paediatric Triage Ward <u>Ng Sze Ka</u> , Chim Ki Man, Wan Wing Yin, Yip Siu Fung <i>United Christian Hospital, Hong Kong</i>
Abst 77	Quality of Life of Children with Cancer in Guangzhou: A Descriptive Quantitative Research <u>Jing Yang</u> , Yuan Zheng, Xia Lu, Ke Liu <i>Sun Yat-sen University, Guangzhou, China</i>
Abst 88	Influencing Factors for Weight-Control Behaviours among Overweight and Obese Children in China <u>Li Xing</u> <i>Central South University, Changsha, China</i>

List of Poster Presentation

- Abst 97 **Identification and Comparison of Interventions Core to Paediatric Nursing Based on the Nursing Interventions Classification (NIC-6th): A Pilot Study**
Jiwen Sun¹, Nanping Shen², Jianhua Lou²
¹Shanghai Jiaotong University, School of Nursing, Shanghai, China, ²Shanghai Children's Medical Center, Shanghai, China
- Abst 99 **Psychometric Properties of the Chinese Version of the Fatigue Scale-Children**
Ka Yan Ho, William, Ho Cheung Li, Katherine, Ka Wai Lam
 School of Nursing, The University of Hong Kong, Hong Kong
- Abst 107 **The Impact of Cancer and its Treatments on Physical Activity Level, Behaviour and Quality of Life in Young Hong Kong Chinese Cancer Patients**
Ka Wai Katherine Lam, Ho Cheung William Li, Ka Yan Eva Ho
 The University of Hong Kong, Hong Kong
- Abst 118 **A Survey of Neonatal Peripherally Inserted Central Catheter(PICC) Practices in Shanghai**
Ying Li¹, Haiyan Chen²
¹Shanghai Jiao Tong University School of Nursing, Shanghai, China, ²Xin Hua Hospital Affiliated to Shanghai Jiao Tong University School of Medicine, Shanghai, China
- Abst 126 **The Impact of Leukemia and Its Therapy-related Symptoms on the Physical and Psychological Well-being among Chinese Children in Mainland: An Exploratory Study**
Xia Wei, Li Ho Cheung, William
 School of Nursing, The University of Hong Kong, Hong Kong
- Abst 147 **The Accuracy of Tactile Assessment of Fever in Children by Caregivers: A Systematic Review and Meta-Analysis**
Yanwei Li, Leshan Zhou, Xing Li
 Xiang Ya Nursing School of Central South University, ChangSha, China

Acknowledgement

豐昌順

校服專門店

網址：www.fcsl.com.hk

電話：(852) 2684 1386

傳真：(852) 2687 4921

豐昌順有限公司

豐昌順(沙田)有限公司

校服專家
品質優良

歷史悠久
信譽保證

門市部：

沙田：沙田禾輦邨禾輦商場三樓 319 號舖	2684 1387
馬鞍山：馬鞍山中心商場地下 A80 號舖	3549 6799
大埔：大埔昌運中心一樓商場 118 號舖	2665 1733
將軍澳：將軍澳寶林商場寶勤樓 304-305 號舖	2702 7066
東九龍：牛頭角振華路 20 號安基商場一樓 114 號舖	2684 1380
天水圍：天水圍嘉湖銀座第一期商場一樓 162A 號舖	3156 1752
西九龍：長沙灣麗閣邨麗閣商場地下 3 號舖	2728 2761
北角：香港北角永興街 33 號地下	2578 1421
筲箕灣：筲箕灣天悅廣場一樓 1117 號舖	2578 1423
上環：上環皇后大道中 328 號中源廣場地下 1 號舖	2881 6511

營業時間：上午十時半至下午六時半

(1-6 月份逢星期日休息，7-12 月份加開星期日營業)

通訊處地址：新界沙田火炭山尾街 5-13 號穗輝工廠大廈 20 樓 2001-2013 室

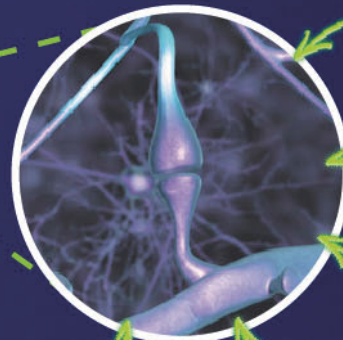
A new nutritional approach in early Alzheimer's Cognitive Problems

Your brain communicates via a vast network of **connections** called **synapses**.

Losing these connections at a faster rate than normal can lead to **memory loss**.

The main constituents of **synapses are formed** through specific biochemical pathways¹.

These pathways depend on the availability of **key nutrients**¹.



OMEGA-3 FATTY ACIDS

URIDINE

CHOLINE

VITAMIN C, E & SELENIUM

B-VITAMINS

Research has shown that people with AD often have **lower levels** of these key nutrients^{2,3}.

- ✓ Omega-3 fatty acids
- ✓ Uridine
- ✓ Choline
- ✓ B-vitamins
- ✓ Vitamin C & E
- ✓ Selenium



Souvenaid is a once daily drink containing **key nutrients** to support **synapse growth**.

Higher levels than usual are needed in order to counter the effect of synapse loss. This is difficult to achieve from a normal diet.

Clinically proven to **improve memory** in patients with early AD^{4,5}.

It takes time for new synapses to form in the brain...

...so you need to take one bottle of Souvenaid **every day** for at least three months.



Souvenaid is well tolerated⁴⁻⁶.

It can be taken alongside medication including that prescribed for AD⁶.

It's available from your pharmacy.



Cappuccino and vanilla flavours.

Souvenaid is a food for special medical purposes intended for patients diagnosed with early Alzheimer's Cognitive Problems. Communication intended for healthcare professionals only. Souvenaid must be taken under medical supervision.

www.souvenaid.com
www.nutriciaclinical.com.hk

NUTRICIA
Souvenaid[®]

References: 1. Wurtman RJ, Cansev M, Sakamoto T, et al. Use of phosphatide precursors to promote synaptogenesis. *Annu Rev Nutr.* 2009;29:59-87. 2. Lopes da Silva S, Elemans S, Stijnen T, et al. Plasma nutrient status of Alzheimer's disease patients compared to cognitively intact elderly controls; a systematic review and meta-analysis. *Alzheimers Dementia.* 2013; 8(4): Supple 2216. 3. Olde Rikkert MG, Verhey F, Sijben J, et al. Differences in nutritional status between very mild Alzheimer's disease patients and healthy controls. *Journal of Alzheimer's disease.* In press. 4. Scheltens P, Kamphuis PJ, Verhey FR, et al. Efficacy of a medical food in mild Alzheimer's: A randomized, controlled trial. *Alzheimers Dement.* 2010; 6(1):1-10.e1. 5. Scheltens P, Twisk JW, Blesa R, et al. Efficacy of Souvenaid in Mild Alzheimer's: Results from a Randomized, Controlled Trial. *Journal of Alzheimer's disease.* 2012; 31:225-236. 6. Shah R, Kamphuis P, Leurgans S, et al. The S-Connect study: results from a randomized, controlled trial of Souvenaid. *Alzheimer's Research & Therapy.* 2013; 5:59



SCHOOL OF NURSING
LI KA SHING FACULTY OF MEDICINE
THE UNIVERSITY OF HONG KONG



4/F, William M.W. Mong Block

21 Sassoon Road, Pokfulam, Hong Kong

Tel: (852) 3917 6965

Email: nursing@hku.hk

Fax: (852) 2872 6079

Website: <http://nursing.hku.hk>